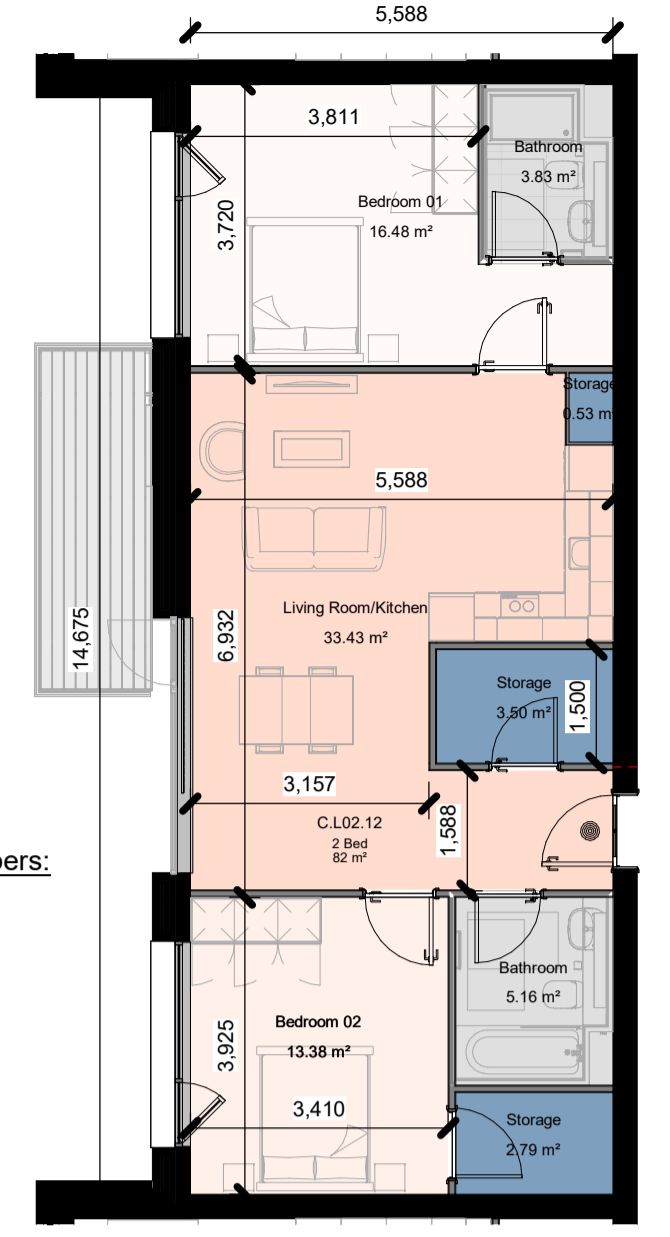




**Apartment Numbers:**  
2 Bed (A)-(4P)

C.M00.04  
C.L01.05  
C.L02.06  
C.L03.06  
C.L04.06  
C.L05.06  
C.L06.06  
C.L07.04  
C.L08.04

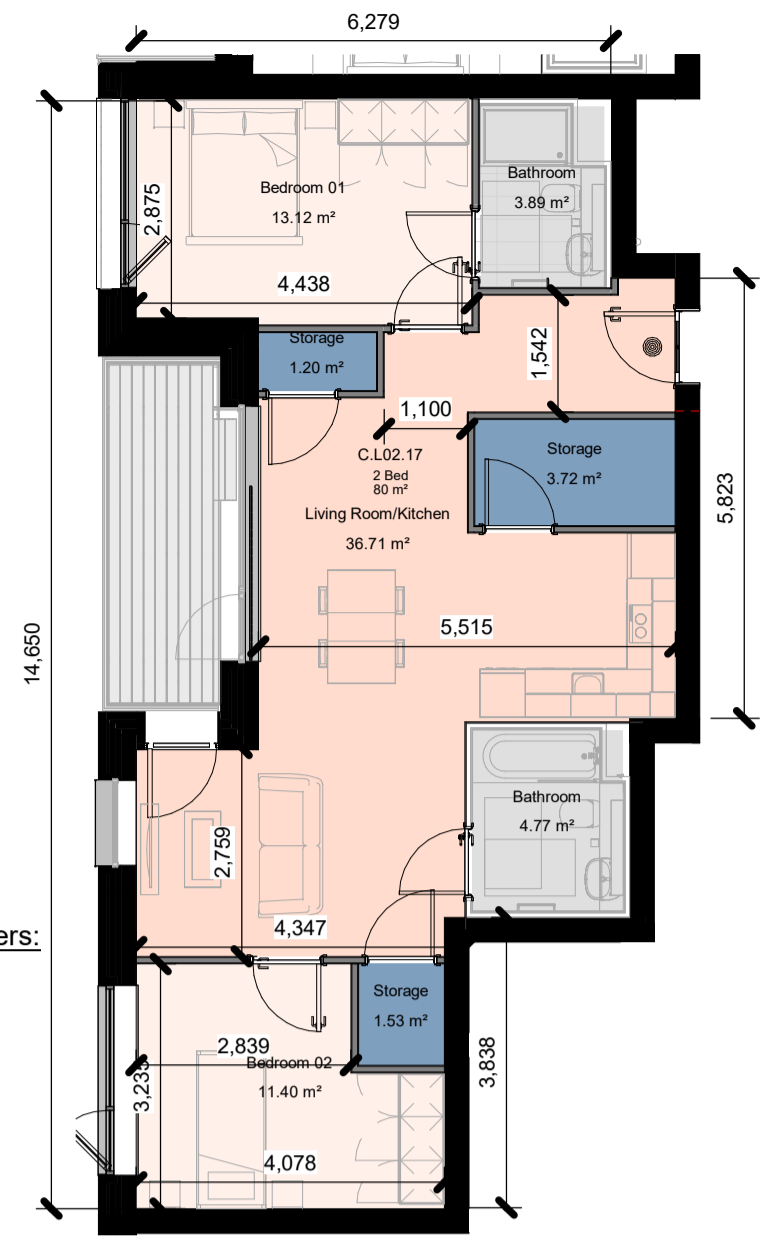
**Apt Type 2 Bed (A)-(4P)**  
1 : 100



**Apartment Numbers:**  
2 Bed (B)-(4P)

C.M00.10  
C.L01.11  
C.L02.12  
C.L03.12  
C.L04.12  
C.L05.12  
C.L06.12  
C.L07.11

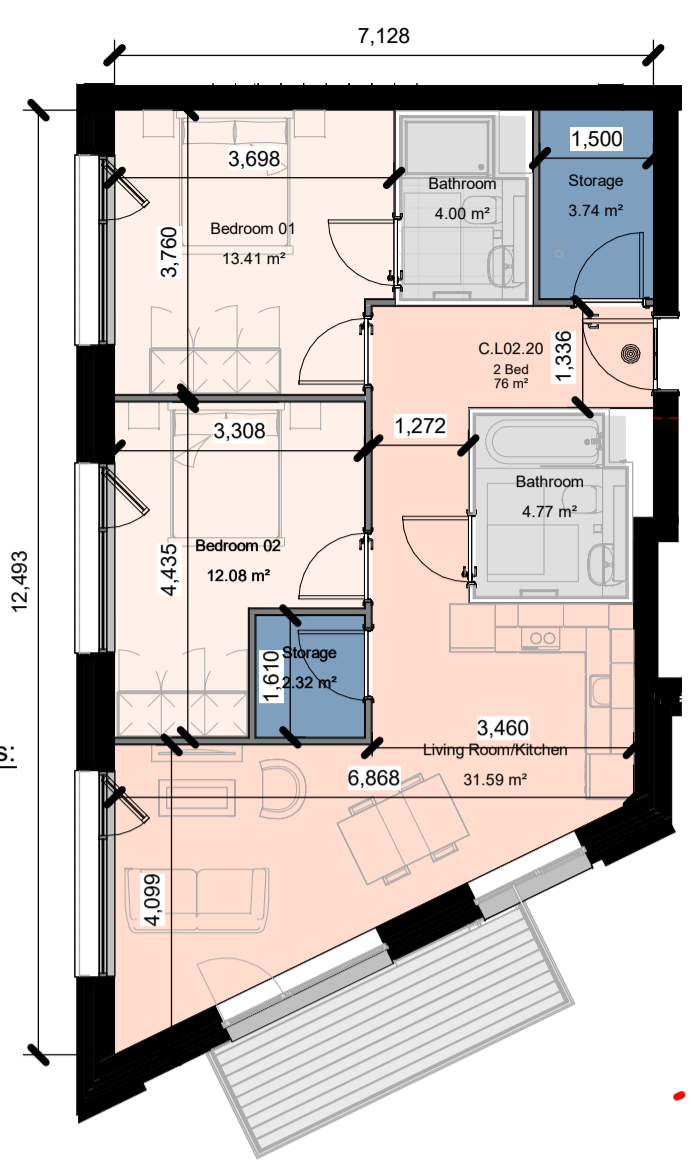
**Apt Type 2 Bed (B)-(4P)**  
1 : 100



**Apartment Numbers:**  
2 Bed (C)-(4P)

C.M00.14  
C.L01.16  
C.L02.17  
C.L03.17  
C.L04.17  
C.L05.17  
C.L06.17  
C.L07.15

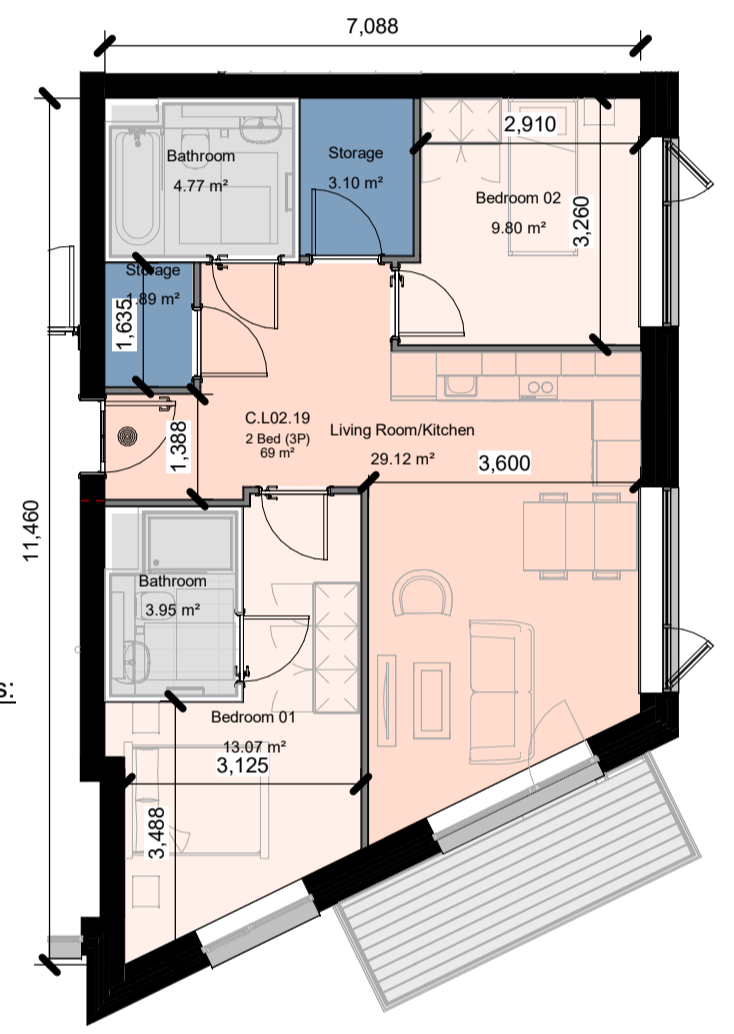
**Apt Type 2 Bed (C)-(4P)**  
1 : 100



**Apartment Numbers:**  
2 Bed (D)-(4P)

C.L00.07  
C.M00.18  
C.L01.19  
C.L02.20  
C.L03.20  
C.L04.20  
C.L05.20  
C.L06.20  
C.L07.19

**Apt Type 2 Bed (D)-(4P)**  
1 : 100



**Apartment Numbers:**  
2 Bed (E)-(3P)

C.M00.17  
C.L02.19  
C.L03.19  
C.L04.19  
C.L05.19  
C.L06.19  
C.L07.18

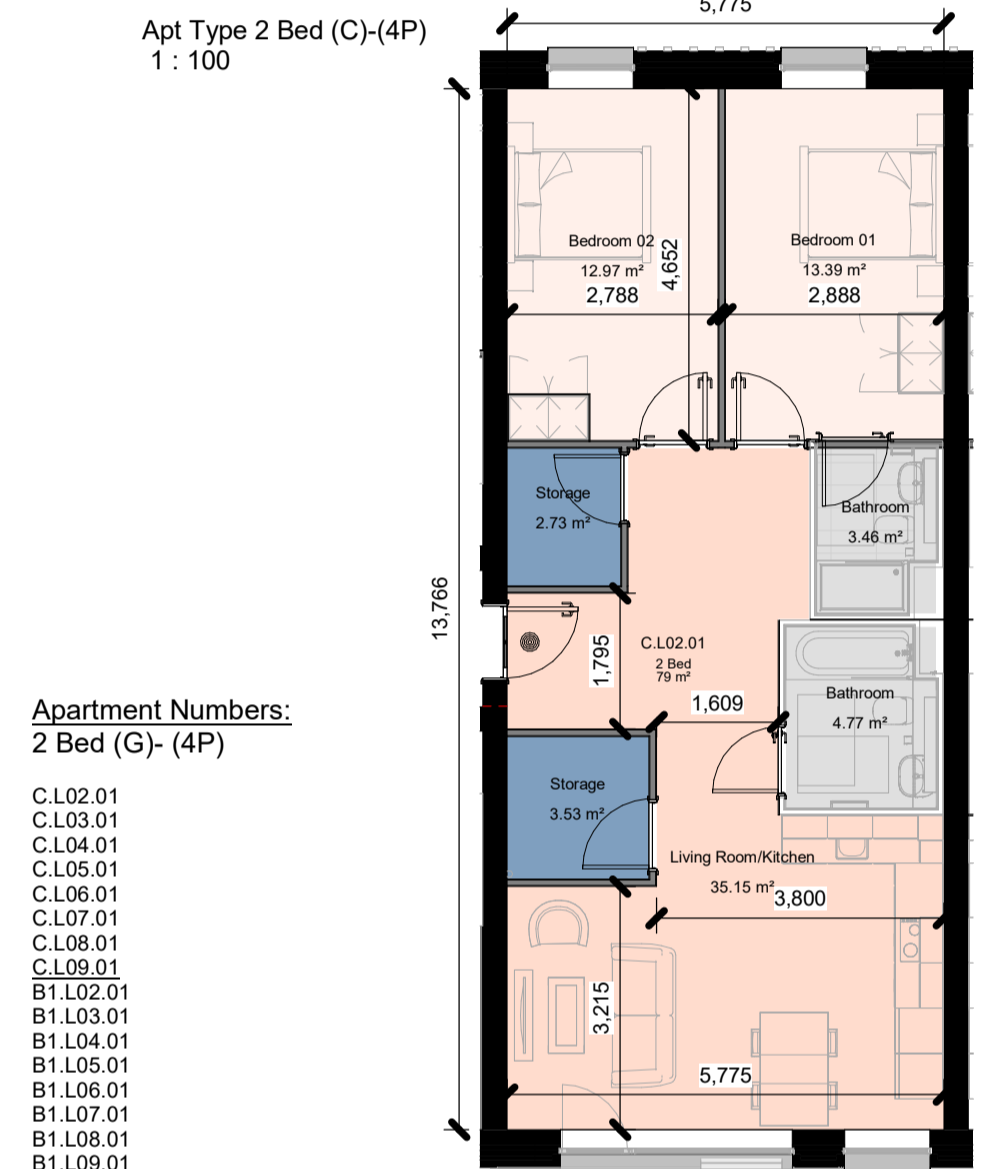
**Apt Type 2 Bed (E)-(3P)**  
1 : 100



**Apartment Numbers:**  
2 Bed (F)-(4P)

C.L02.05  
C.L03.05  
C.L04.05  
C.L05.05  
C.L06.05  
C.L07.05  
C.L08.05  
C.L09.05  
B1.L02.03  
B1.L03.03  
B1.L04.03  
B1.L05.03  
B1.L06.03  
B1.L07.03  
B1.L08.03

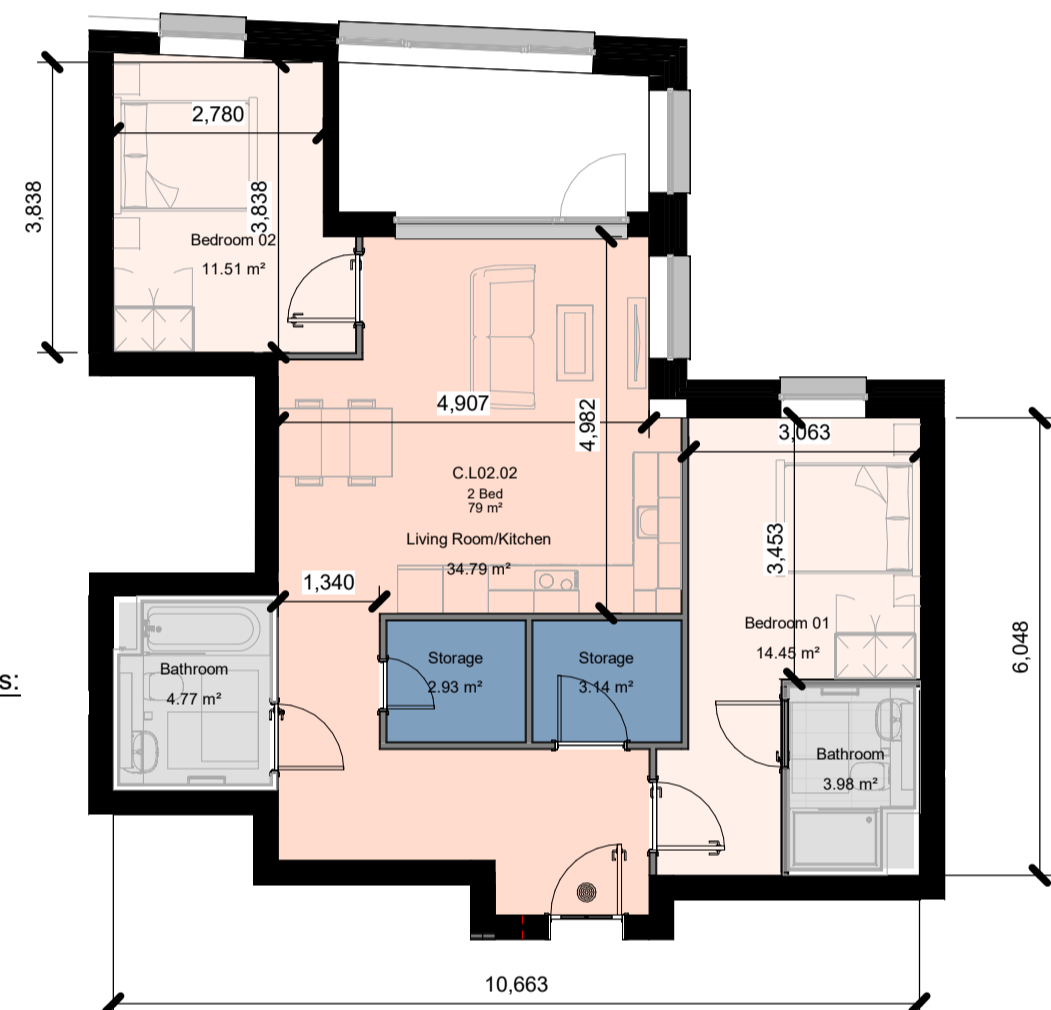
**Apt Type 2 Bed (F)-(4P)**  
1 : 100



**Apartment Numbers:**  
2 Bed (G)-(4P)

C.L02.01  
C.L03.01  
C.L04.01  
C.L05.01  
C.L06.01  
C.L07.01  
C.L08.01  
C.L09.01  
B1.L02.01  
B1.L03.01  
B1.L04.01  
B1.L05.01  
B1.L06.01  
B1.L07.01  
B1.L08.01  
B1.L09.01

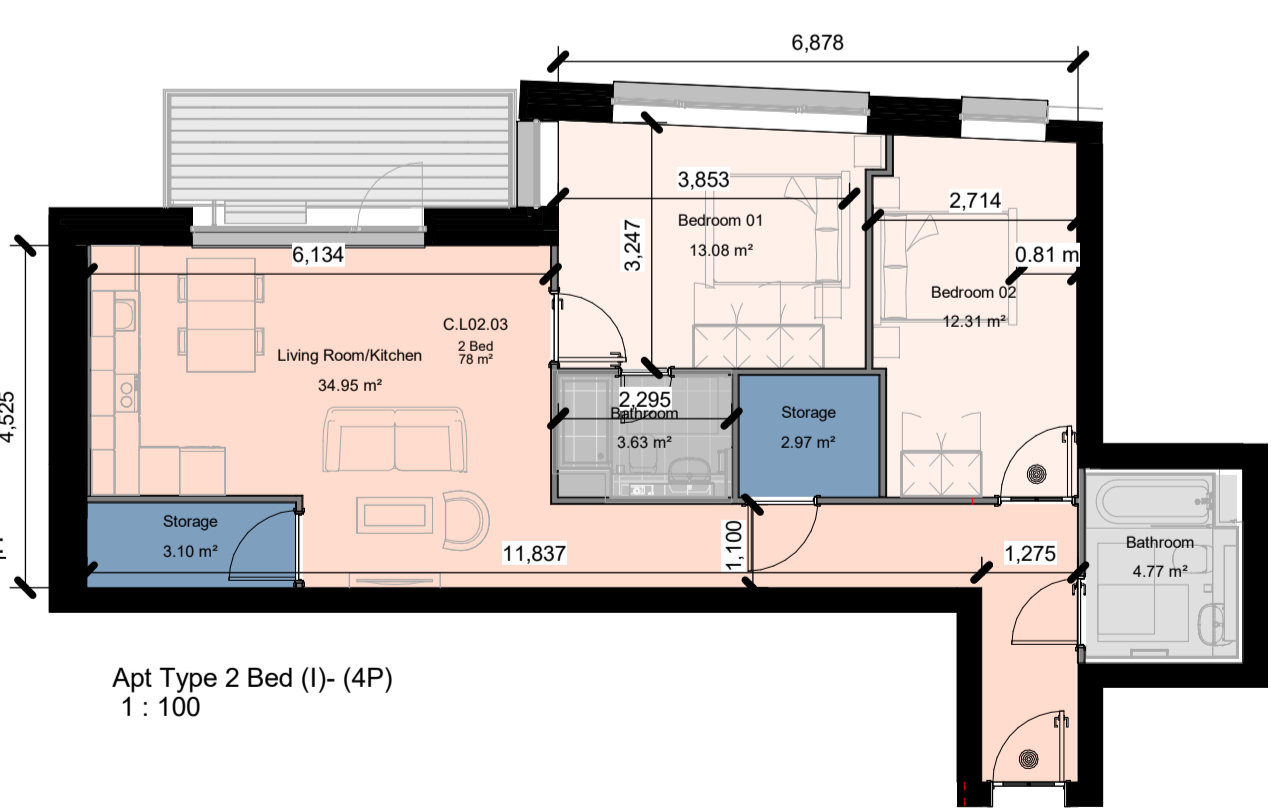
**Apt Type 2 Bed (G)-(4P)**  
1 : 100



**Apartment Numbers:**  
2 Bed (H)-(4P)

C.L02.02  
C.L03.02  
C.L04.02  
C.L05.02  
C.L06.02

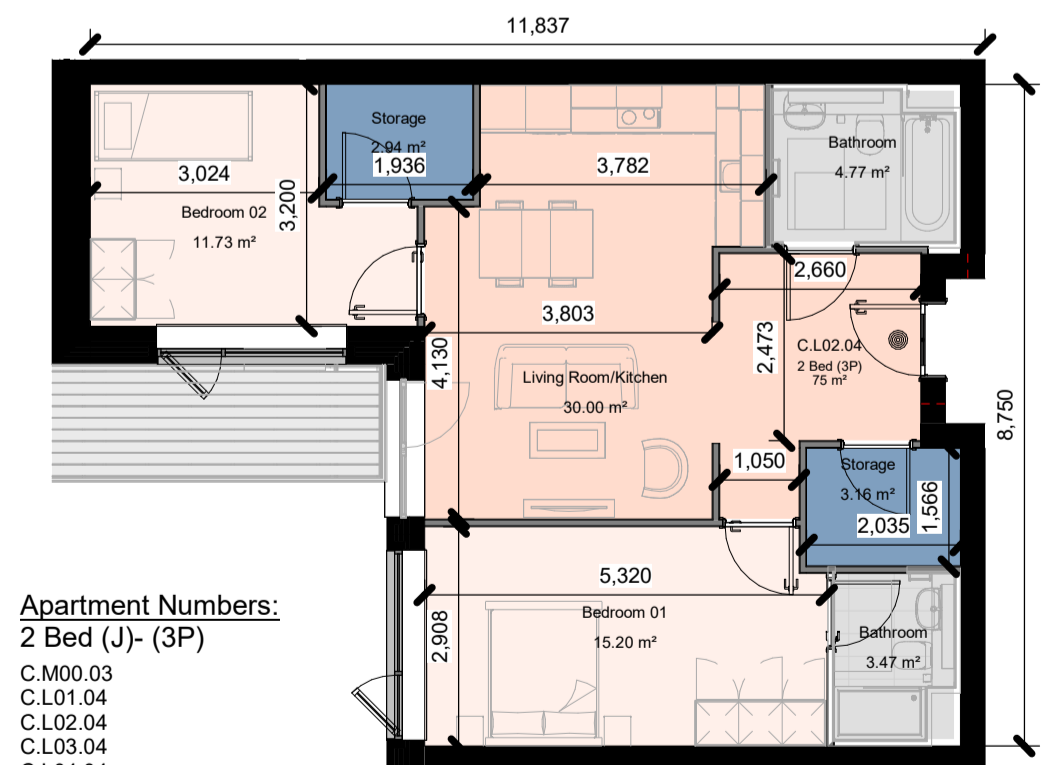
**Apt Type 2 Bed (H)-(4P)**  
1 : 100



**Apartment Numbers:**  
2 Bed (I)-(4P)

C.M00.02  
C.L01.03  
C.L02.03  
C.L03.03  
C.L04.03  
C.L05.03  
C.L06.03

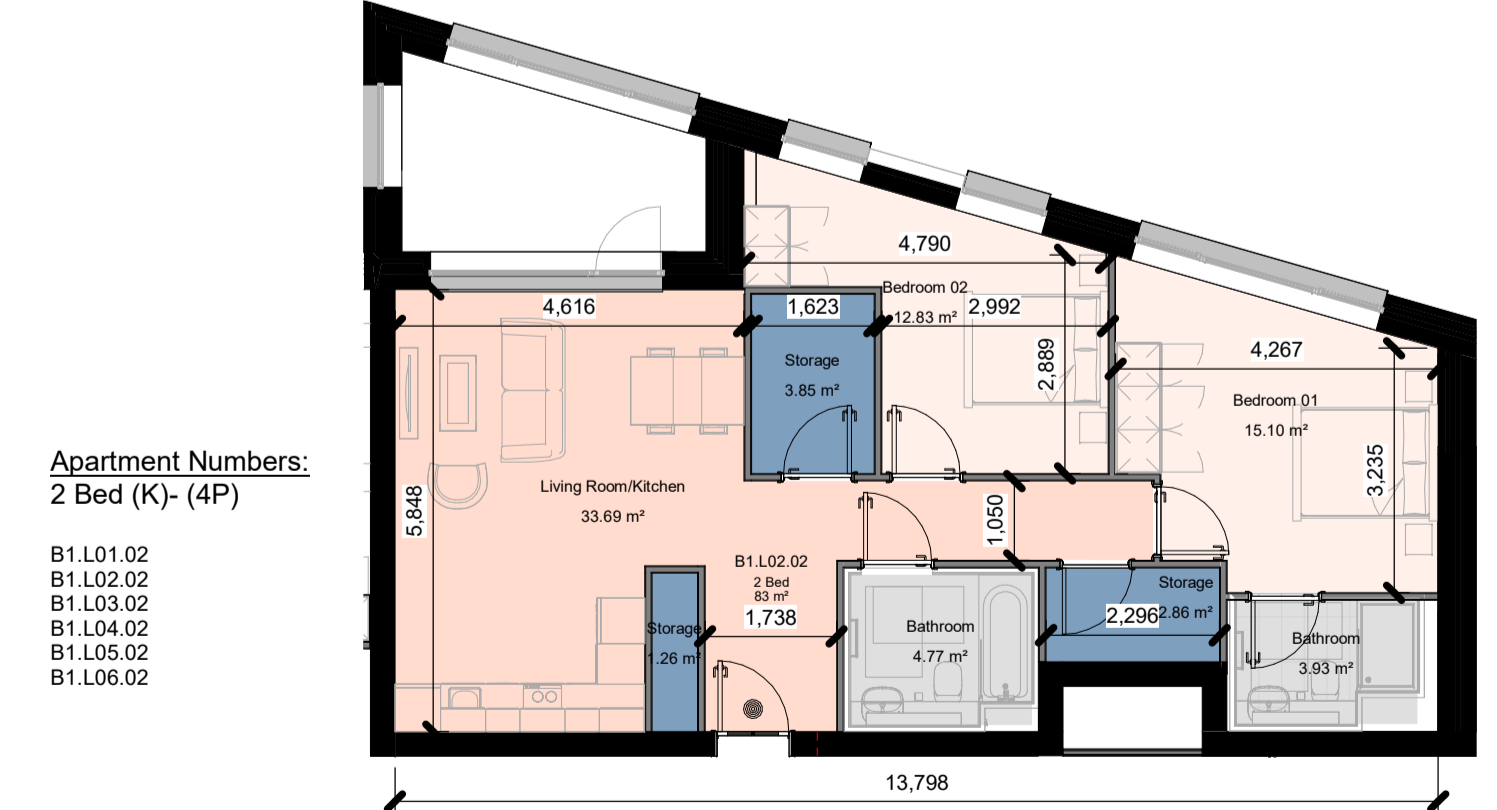
**Apt Type 2 Bed (I)-(4P)**  
1 : 100



**Apartment Numbers:**  
2 Bed (J)-(3P)

C.M00.03  
C.L01.04  
C.L02.04  
C.L03.04  
C.L04.04  
C.L05.04  
C.L06.04

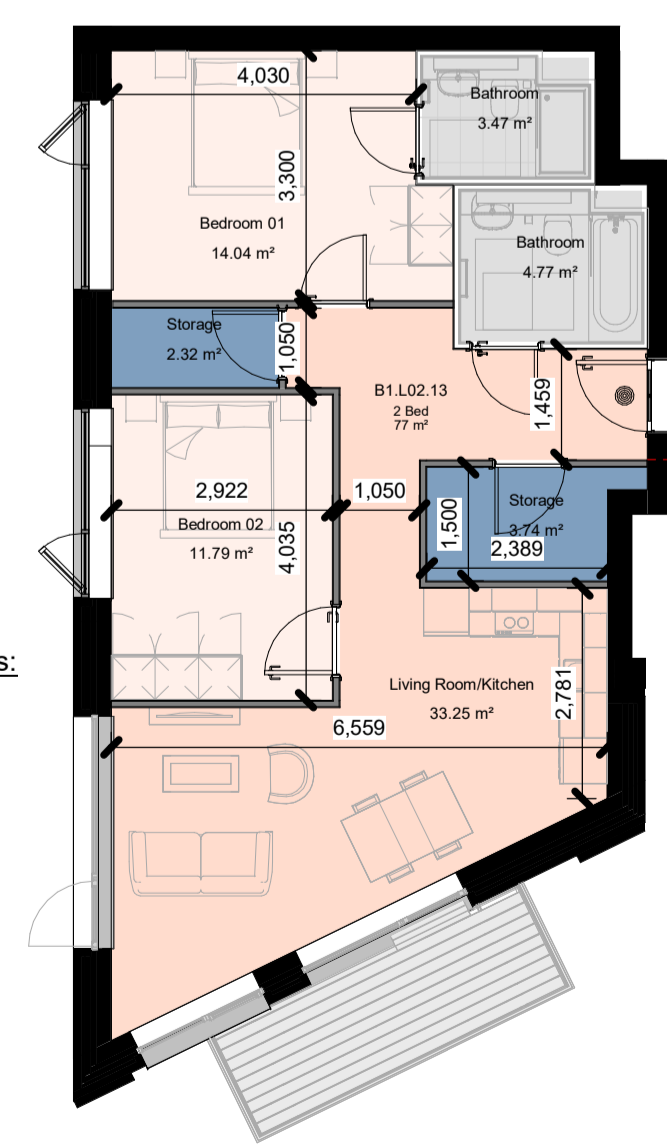
**Apt Type 2 Bed (J)-(3P)**  
1 : 100



**Apartment Numbers:**  
2 Bed (K)-(4P)

B1.L01.02  
B1.L02.02  
B1.L03.02  
B1.L04.02  
B1.L05.02  
B1.L06.02

**Apt Type 2 Bed (K)-(4P)**  
1 : 100



**Apartment Numbers:**  
2 Bed (L)-(4P)

B1.L01.12  
B1.L02.13  
B1.L03.13  
B1.L04.13  
B1.L05.13  
B1.L06.13  
B1.L07.13  
B1.L08.13  
B1.L09.08  
B1.L10.06  
B1.L11.06

**Apt Type 2 Bed (L)-(4P)**  
1 : 100

**Notes:**  
- Do not scale from this drawing. Use figured dimensions in all cases.  
- Verify dimensions on site and report any discrepancies to the Architect immediately.  
- This drawing is to be read in conjunction with the Architect's Specification.  
- © This drawing is copyright and may only be reproduced with the Architect's permission.

**Drawing Notes:**

**PLANNING LEGEND**

SYMBOL	DESCRIPTION
[Red line]	SITE BOUNDARY LINE
[Blue line]	OWNERSHIP LINE
[Black line]	EXISTING STRUCTURES
[Yellow triangle]	WAYLEAVE / RIGHT OF WAY
[Green triangle]	RESIDENTIAL ENTRANCE
[Orange triangle]	PUBLIC ENTRANCE
[Red hatched area]	AREA OF PROPOSED AMENDMENT
[Blue hatched area]	PROPOSED AMENDMENT TO ROOMS

Rev.	Date	Drawn	Details of Issue / Revision
P01	06/12/2024		Issued for Planning Approval

Dartry Mills,  
Dartry Road  
Dublin 6,  
D06 Y0E3  
T: +353 (0)1 498 7000  
W: www.reddyarchitecture.com  
E: info@reddyarchitecture.com

**Ruirside Developments Ltd.**

**Project Details:**  
Residential Development, Block B1 & C  
42a Parkgate St, Dublin 8

**Drawing Title:**  
Apartment Types - Sheet 01

Job No.	Sheet Size	Scale
P24-216D	A1	@A1: 1:100

Issue Date:	Drawn By:	Reviewed By:
06/12/24	BR	MH

Status	Purpose of Issue
P3-S	Planning Permission

Project	System	Spatial Zone	Level	Type	Originator	Role	Number	Revision
PGATE-02-BC-ZZZ-DR-RAU-AR-5010								P01