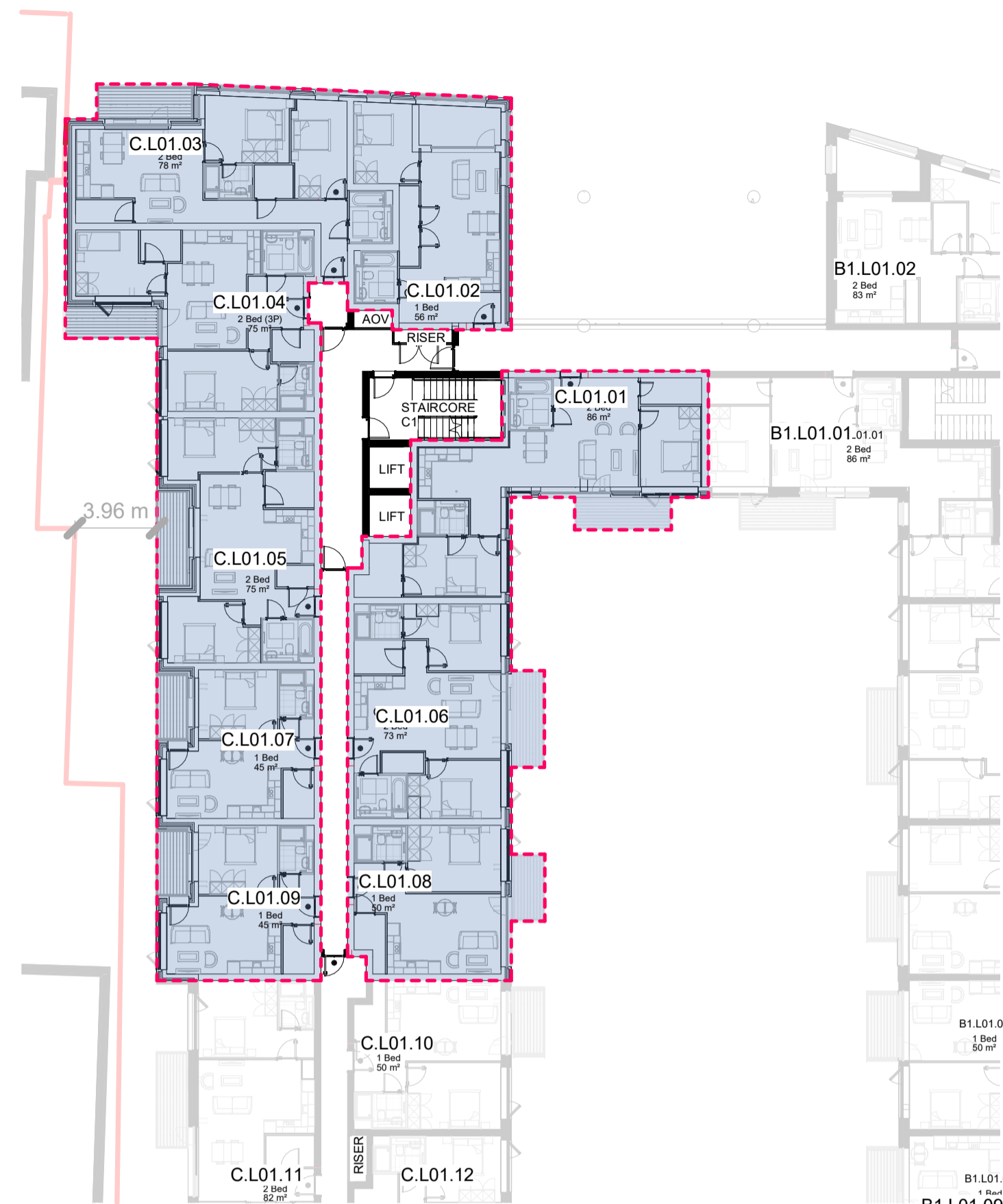
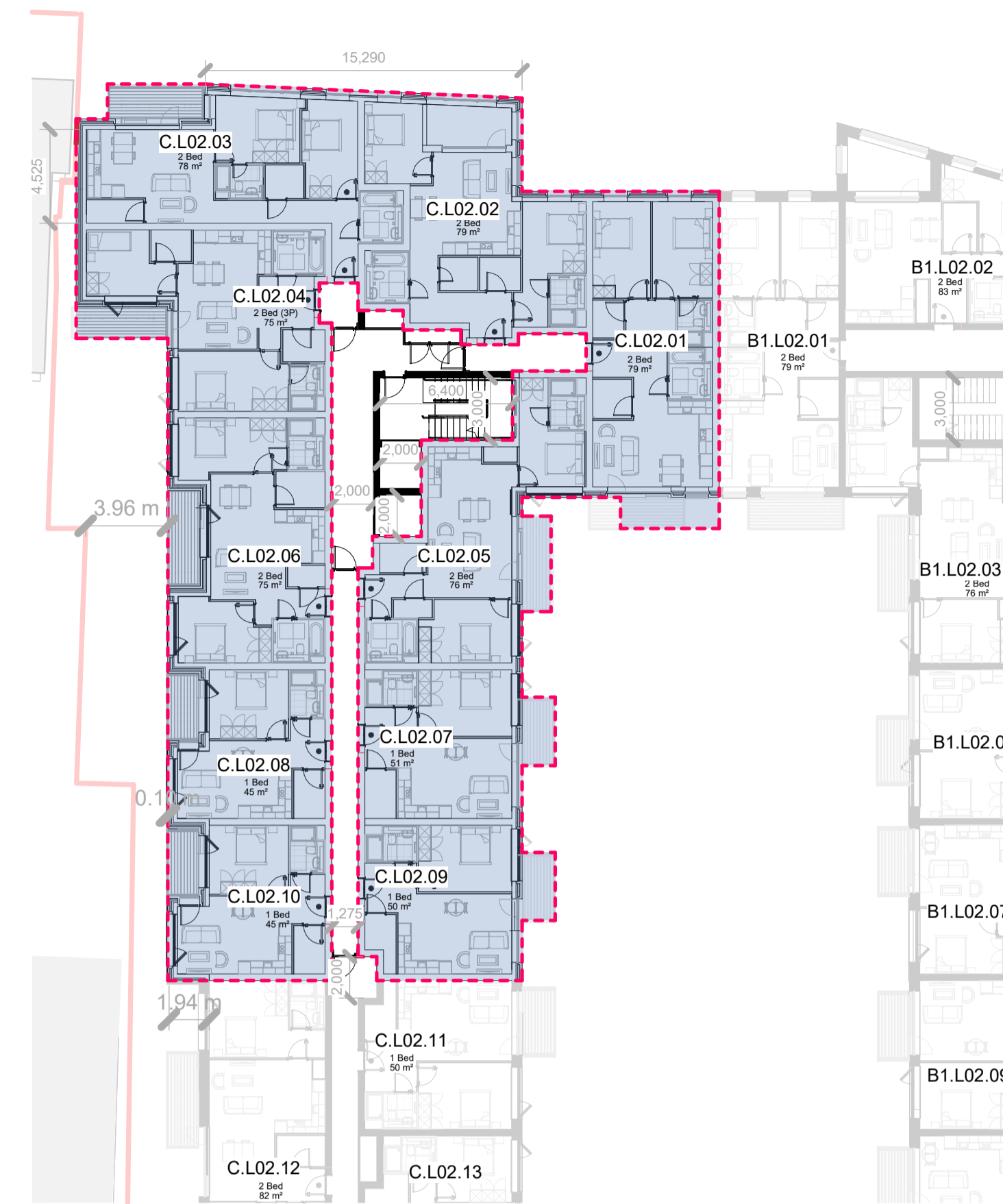


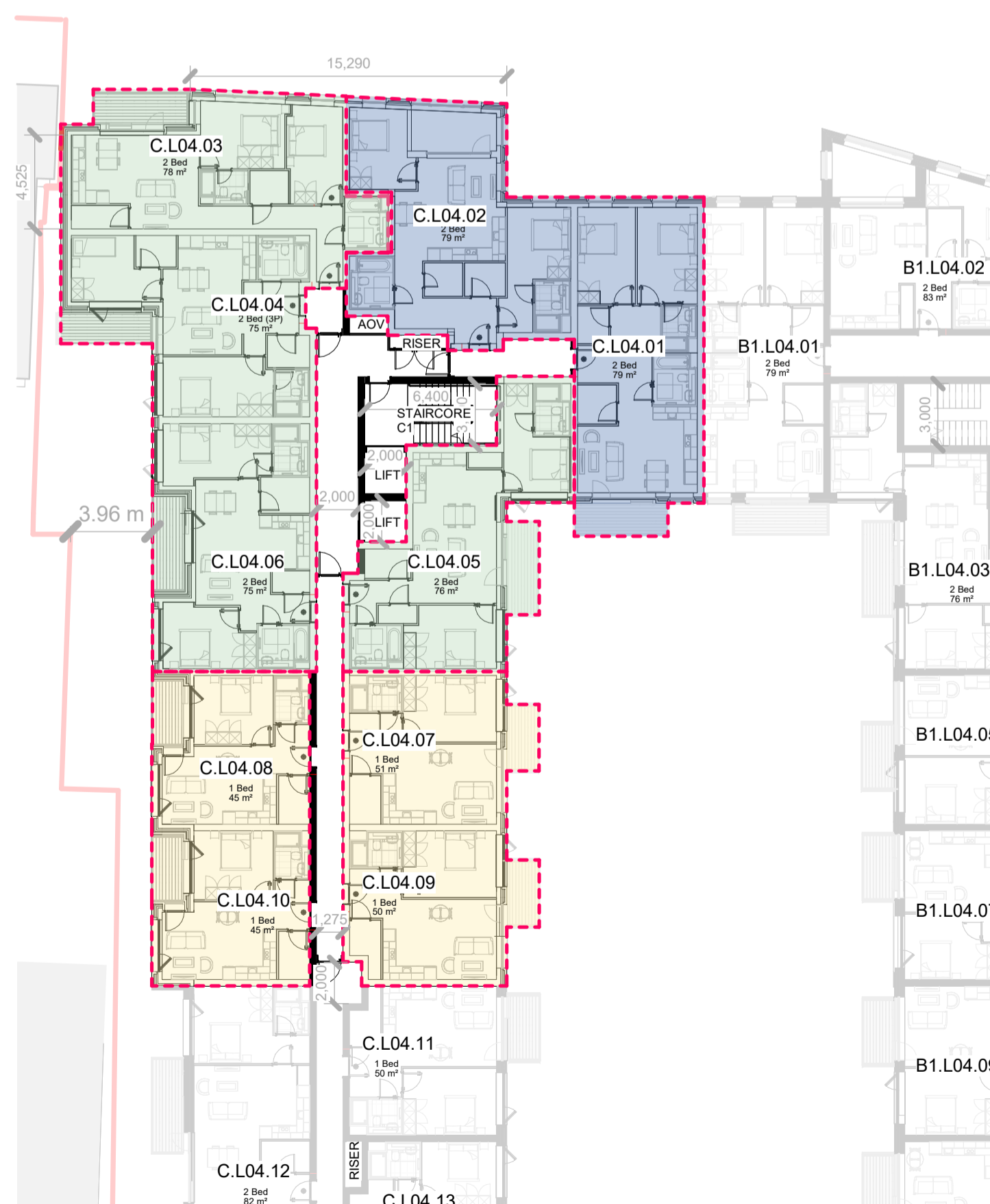
L00 - Proposed Ground Floor Plan Part V  
1 : 250



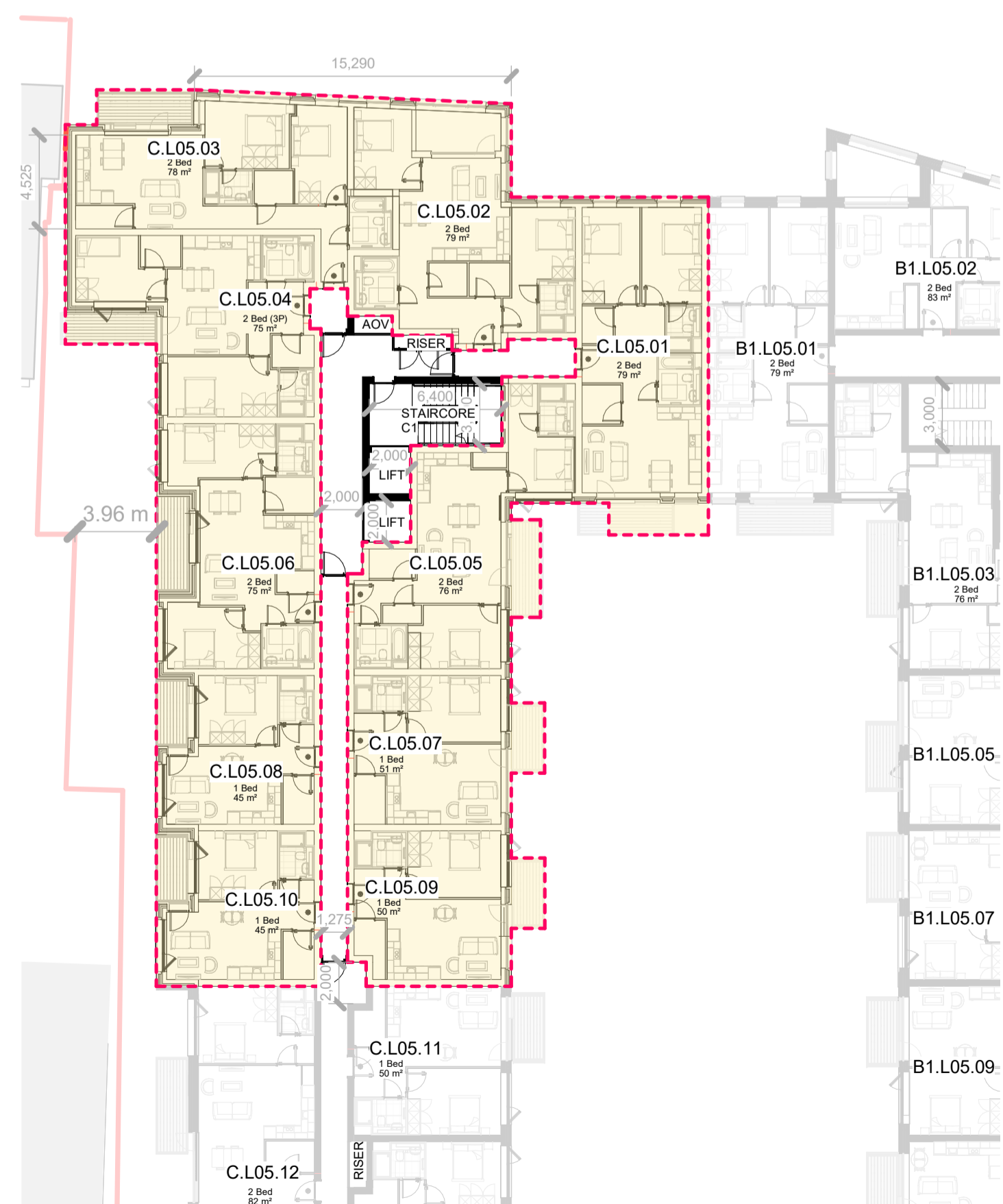
L01 - Proposed First Floor Plan Part V  
1 : 250



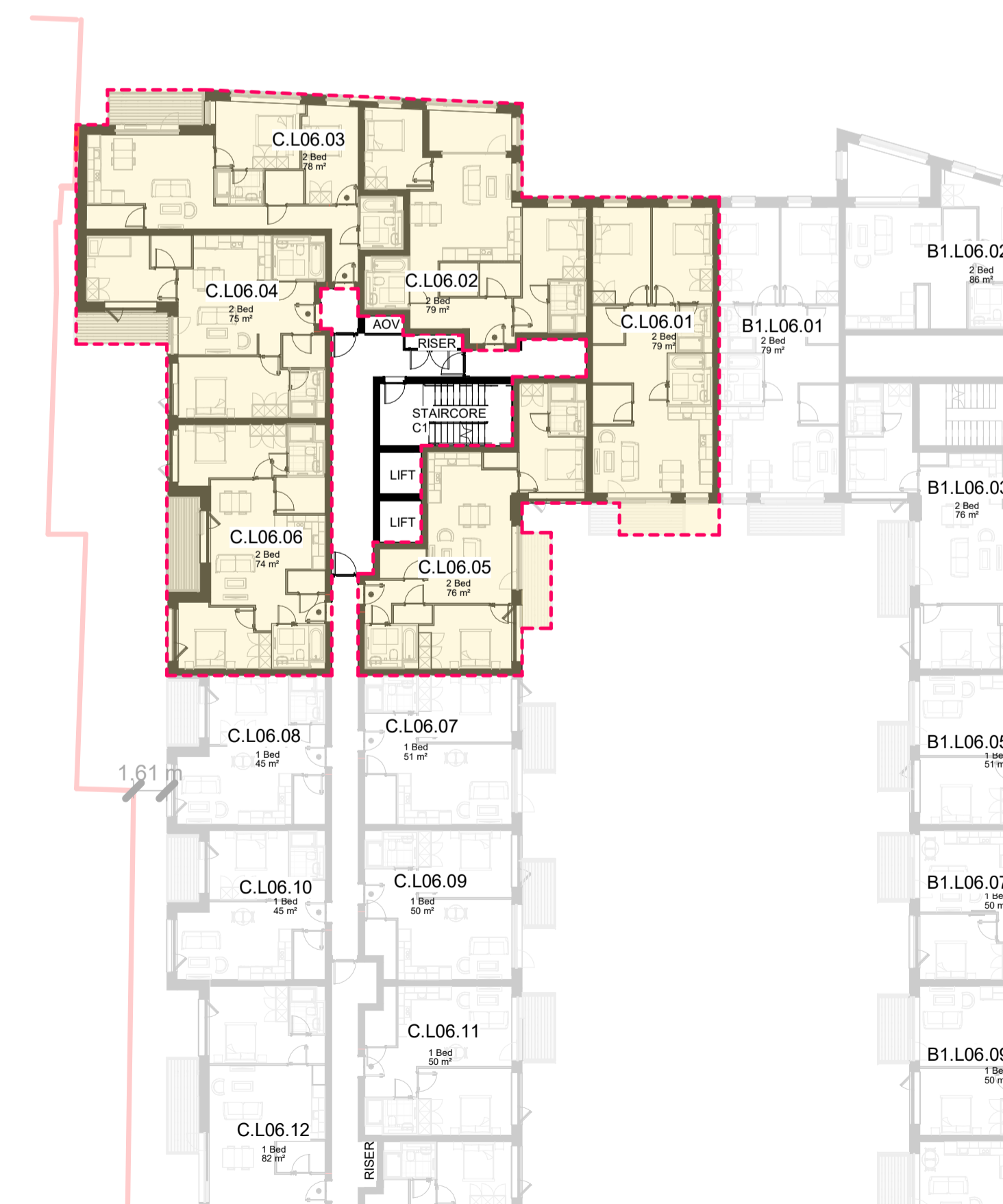
L02 - Proposed 2nd-3rd Floor Plan Part V  
1 : 250



L04 - Proposed 4th Floor Plan Part V  
1 : 250



L05 - Proposed 5th Floor Plan Part V  
1 : 250



L06 - Proposed 6th Floor Plan Part V  
1 : 250

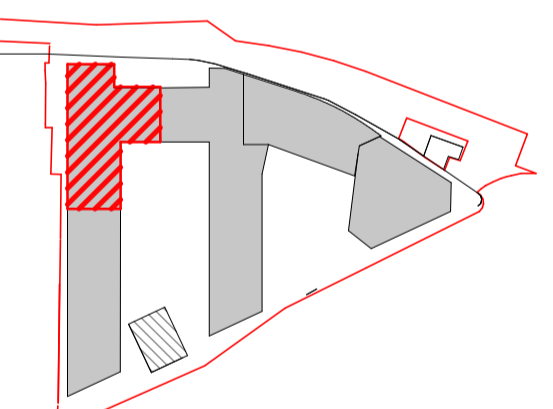
**Notes:**  
 - Do not scale from this drawing. Use figured dimensions in all cases.  
 - Verify dimensions on site and report any discrepancies to the Architect immediately.  
 - This drawing is to be read in conjunction with the Architect's Specification.  
 - © This drawing is copyright and may only be reproduced with the Architect's permission.

**Drawing Notes:**

Level	Apartment No.	Part V Allocation
L01	C.L01.01	Block B&C
L01	C.L01.02	Block B&C
L01	C.L01.03	Block B&C
L01	C.L01.04	Block B&C
L01	C.L01.05	Block B&C
L01	C.L01.06	Block B&C
L01	C.L01.07	Block B&C
L01	C.L01.08	Block B&C
L01	C.L01.09	Block B&C
L02 - L03	C.L02.01 / C.L03.01	Block B&C
L02 - L03	C.L02.02 / C.L03.02	Block B&C
L02 - L03	C.L02.03 / C.L03.03	Block B&C
L02 - L03	C.L02.04 / C.L03.04	Block B&C
L02 - L03	C.L02.05 / C.L03.05	Block B&C
L02 - L03	C.L02.06 / C.L03.06	Block B&C
L02 - L03	C.L02.07 / C.L03.07	Block B&C
L02 - L03	C.L02.08 / C.L03.08	Block B&C
L02 - L03	C.L02.09 / C.L03.09	Block B&C
L02 - L03	C.L02.10 / C.L03.10	Block B&C
L04	C.L04.01	Block B&C
L04	C.L04.02	Block B&C
L04	C.L04.03	Block B2
L04	C.L04.04	Block B2
L04	C.L04.05	Block B2
L04	C.L04.06	Block B2
L04	C.L04.07	Block A
L04	C.L04.08	Block A
L04	C.L04.09	Block A
L04	C.L04.10	Block A
L05	C.L05.01	Block A
L05	C.L05.02	Block A
L05	C.L05.03	Block A
L05	C.L05.04	Block A
L05	C.L05.05	Block A
L05	C.L05.06	Block A
L05	C.L05.07	Block A
L05	C.L05.08	Block A
L05	C.L05.09	Block A
L05	C.L05.10	Block A
L06	C.L06.01	Block A
L06	C.L06.02	Block A
L06	C.L06.03	Block A
L06	C.L06.04	Block A
L06	C.L06.05	Block A
L06	C.L06.06	Block A
Total A		20 Units
Total B2		4 Units
Total B&C		31 Units
Total		55 Units

**PART V LEGEND**

- PART V BLOCK A
- PART V BLOCK B2
- PART V BLOCK B & C



Key Site Plan Part V  
1 : 2000

Rev.	Date	Drawn	Details of Issue / Revision
P01	06/12/2024		Issued for Planning Approval

**reddyQ+U** | Dartry Mills, Dartry Road, Dublin 6, D06 Y0E3  
 T: +353 (0)1 498 7000  
 W: www.reddyarchitecture.com  
 E: info@reddyarchitecture.com

Client Details:  
**Rurside Developments Ltd.**

Project Details:  
**Residential Development, Block B1 & C  
 42a Parkgate St, Dublin 8**

Drawing Title:  
**Proposed Part V Plans**

Job No. <b>P24-216D</b>	Sheet Size: <b>A1</b>	Scale @A1: <b>1:250</b>
Issue Date: <b>06/12/24</b>	Drawn By: <b>JH</b>	Reviewed By: <b>MH</b>

Status	Purpose of Issue
<b>P3-S</b>	<b>Planning Permission</b>
Project - System - Spatial Zone - Level - Type - Originator - Role - Number	
<b>PGATE-02-BC-ZZZ-DR-RAU-AR-1150</b>	
	<b>P01</b>